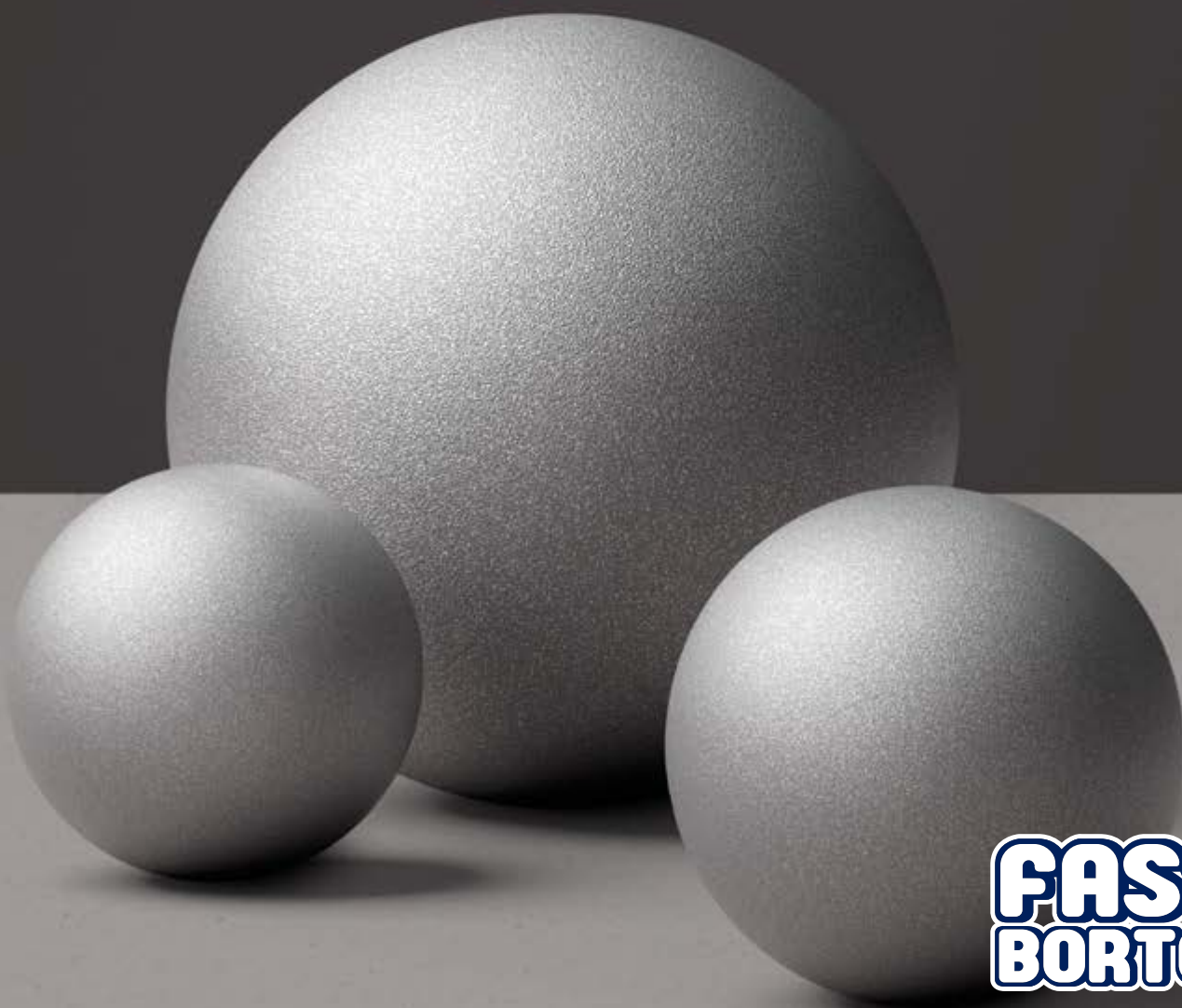


Feel

Sensazioni
oltre la materia

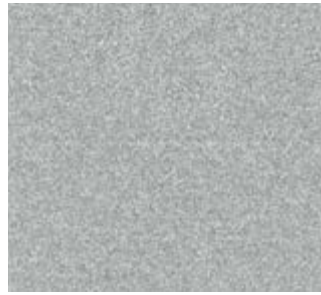
Feel metal Miche F
Feel metal Miche G

Smalto ferromicaceo,
a grana fine e grossa,
dall'aspetto antichizzato,
ideale per conferire
protezione alle superfici
metalliche.



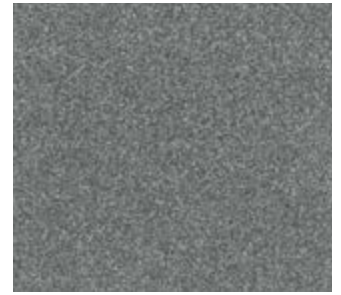
FASSA
BORTOLO

Feel metal Miche F
 Basi e tinte disponibili
 a grana fine
 Bases and colours
 available in fine grain



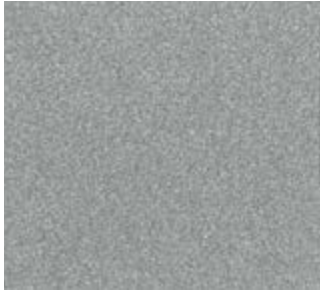
1630 Alluminio
 – Aluminium

Base
 ▲ F

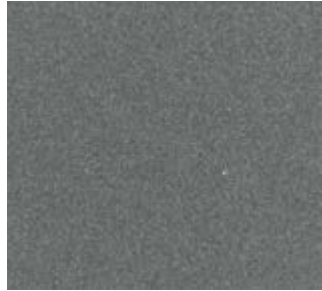


1640 Grafite
 – Graphite

Base
 ● F



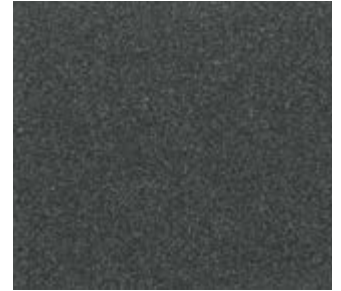
MM01 Argento
 – Silver



MM02 Ferro battuto
 – Wrought iron ● F

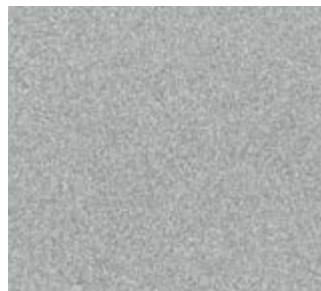


MM03 Rame
 – Copper ● F



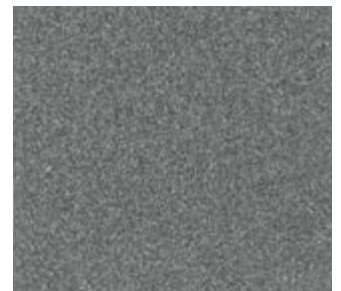
MM04 Antracite
 – Anthracite

Feel metal Miche G
 Basi e tinte disponibili
 a grana grossa
 Bases and colours
 available in coarse grain



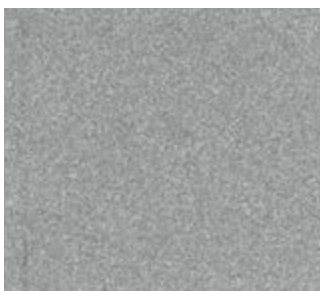
1630 Alluminio
 – Aluminium

Base
 ▲ G



1640 Grafite
 – Graphite

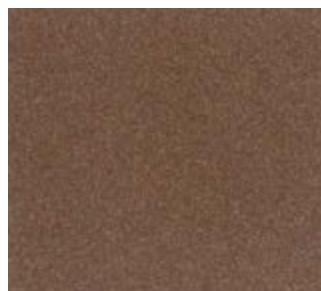
Base
 ● G



MM01 Argento
 – Silver ▲ G



MM02 Ferro battuto
 – Wrought iron



MM03 Rame
 – Copper ● G



MM04 Antracite
 – Anthracite

Feel metal Miche F
Tinte di cartella
riproducibili a tintometro
Chart colours reproducible
with the tintometric system

▲ F
Tinte realizzabili con
base Alluminio a grana fine
Colours with fine-grade
Aluminium base

● F
Tinte realizzabili con
base Grafite a grana fine
Colours with fine-grade
Graphite base



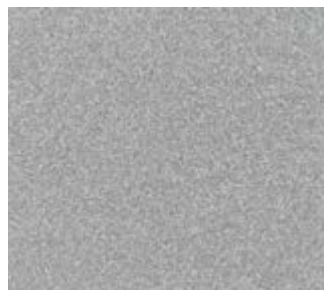
GF10

▲ F



GF11

▲ F



GF12

▲ F



GF13

▲ F



GF14

▲ F



GF15

● F



GF16

▲ F



GF17

● F



GF18

▲ F



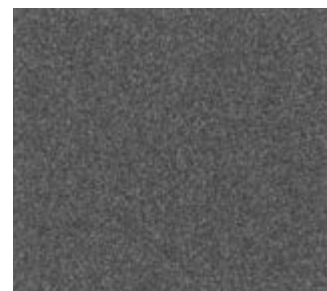
GF19

● F



GF20

● F



GF21

● F



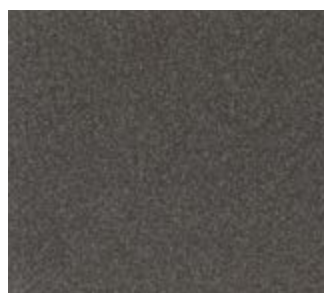
GF22

▲ F



GF23

● F



GF24

● F



GF25

▲ F

Feel metal Miche G
Tinte di cartella
riproducibili a tintometro
Chart colours reproducible
with the tintometric system

▲ G
Tinte realizzabili con base
Alluminio a grana grossa
Colours with coarse-grade
Aluminium base

● G
Tinte realizzabili con base
Grafite a grana grossa
Colours with coarse-grade
Graphite base



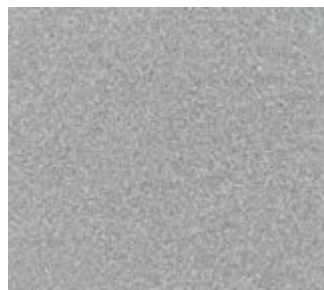
GG10

▲ G



GG11

▲ G



GG12

▲ G



GG13

▲ G



GG14

▲ G



GG15

● G



GG16

▲ G



GG17

● G



GG18

▲ G



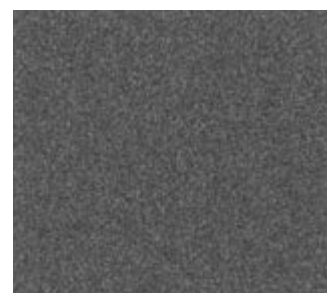
GG19

● G



GG20

● G



GG21

● G



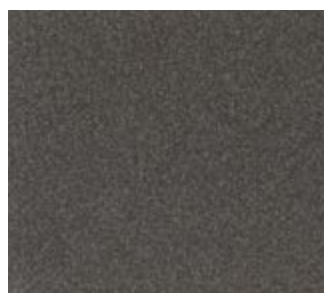
GG22

▲ G



GG23

● G



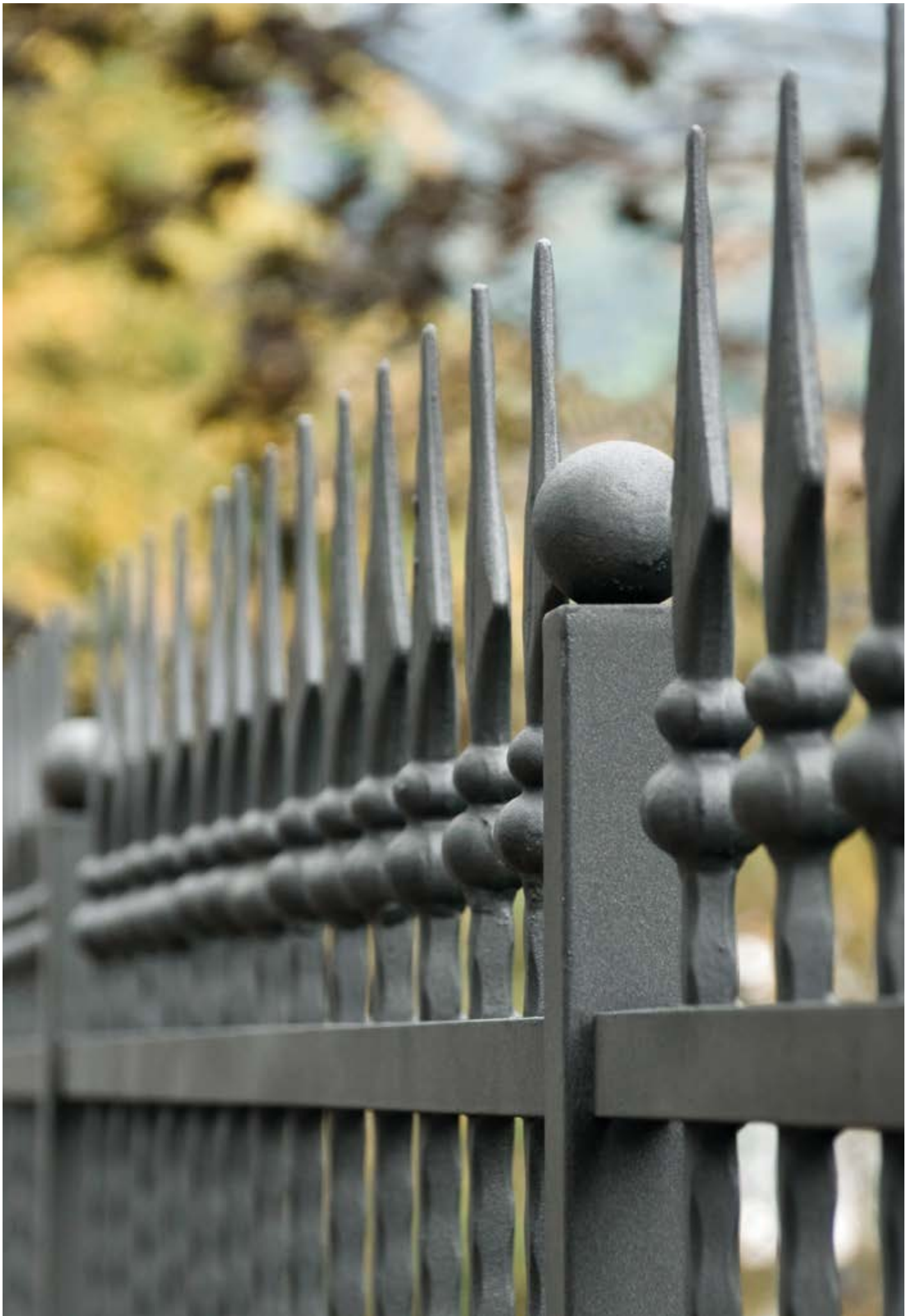
GG24

● G



GG25

▲ G



Feel metal Miche F



Smalto ferromicaceo anticorrosivo grana fine
Diluizione in volume:
per applicazioni a pennello/
rullo 5-10%
con acquaragia; per
applicazioni a spruzzo
10% con diluente sintetico
Resa: ca. 5-6 m²/l (2 strati)
Formato: 2,5l – 0,75l

Fine-grained micaceous iron oxide anti-corrosion enamel
Dilution by volume:
for application by brush/
roller 5-10% with white
spirit; for spray application
10% with synthetic thinner
Yield: approx. 5-6 m²/l
(2 layers)
Packaging: 2.5l – 0.75l

Feel metal Miche G



Smalto ferromicaceo anticorrosivo grana grossa
Diluizione in volume:
per applicazioni a pennello/
rullo 5-10%
con acquaragia; per
applicazioni a spruzzo
10% con diluente sintetico
Resa: ca. 5-6 m²/l (2 strati)
Formato: 2,5l – 0,75l

Coarse-grained micaceous iron oxide anti-corrosion enamel
Dilution by volume:
for application by brush/
roller 5-10% with white
spirit; for spray application
10% with synthetic thinner
Yield: approx. 5-6 m²/l
(2 layers)
Packaging: 2.5l – 0.75l

Sensazioni oltre la materia

Questa cartella è da intendersi come documento indicativo che ha il solo scopo di orientare la scelta cromatica. Le tinte applicate in cartella possono subire nel tempo parziali variazioni di tonalità. Il risultato estetico finale può variare a seconda del supporto utilizzato e della tecnica applicativa. Si consiglia sempre di effettuare una prova direttamente sul supporto prima di iniziare il lavoro.

Per un uso corretto dei prodotti consultare la scheda tecnica e di sicurezza.

This colour chart is intended solely to offer an idea of the colours available for selection.

The colours applied on the chart may be subject to partial variations in tone over time. The end aesthetic result may vary depending on the substrate and the application technique. It is always recommended to carry out tests directly on the substrate before starting the work.

For information on using the products correctly, refer to the datasheet.

Fassa S.r.l.

Via Lazzaris, 3
31027 Spresiano TV – Italia

Tel +39 0422 7222
Fax +39 0422 887509

www.fassabortolo.com
fassa@fassabortolo.com

